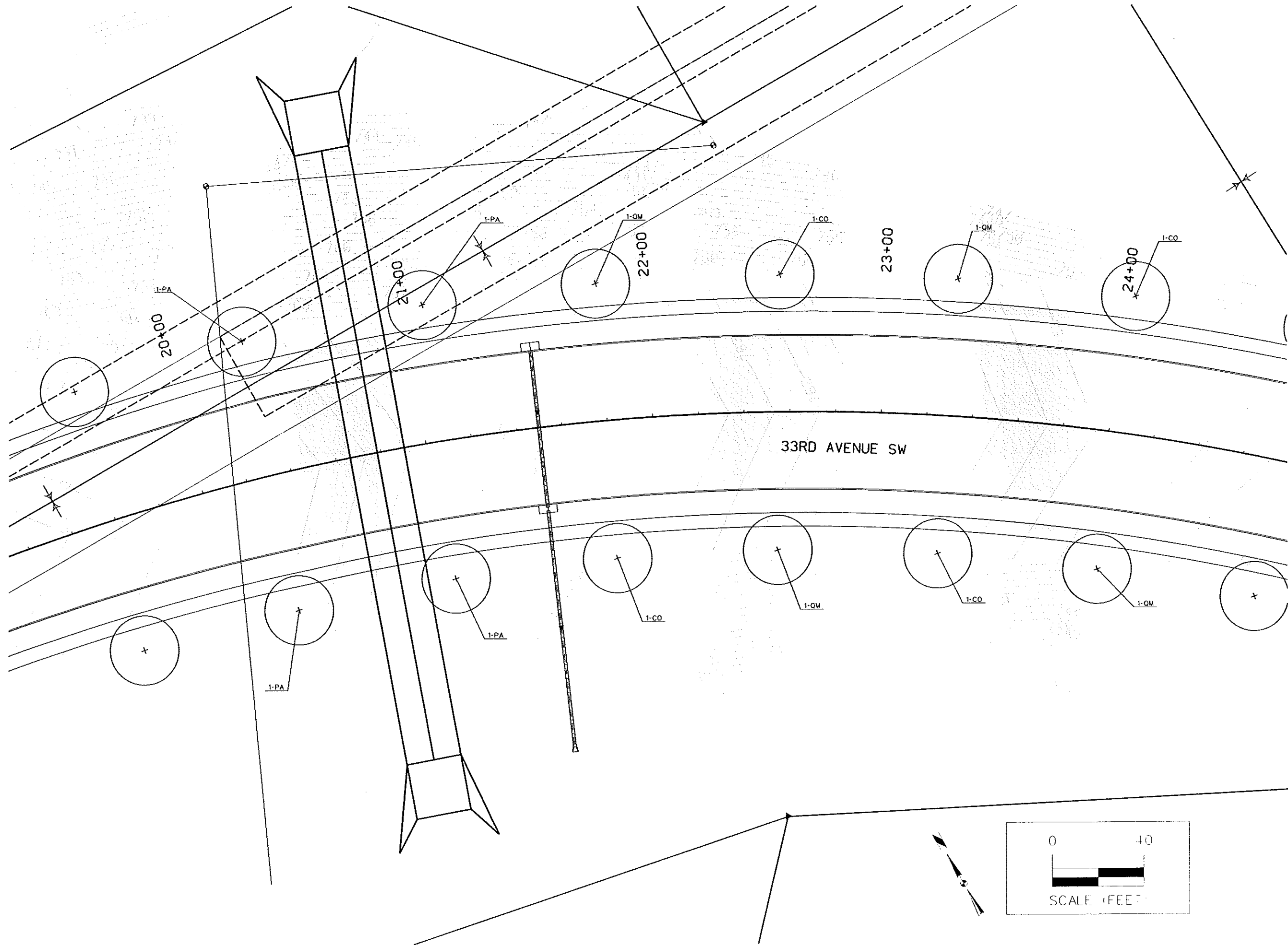


3/11/2009 11:20:24 AM  
 C:\Users\j\Documents\13\BRI 0489\1\Drawings\33rd Ave SW\33rd Ave SW.dwg  
 V:\APPDATA\LOCAL\13\BRI 0489\1\Drawings\33rd Ave SW\33rd Ave SW.dwg



**33RD AVE. SW, FROM 18TH ST. TO 10TH ST.**

**PLANTING PLAN**

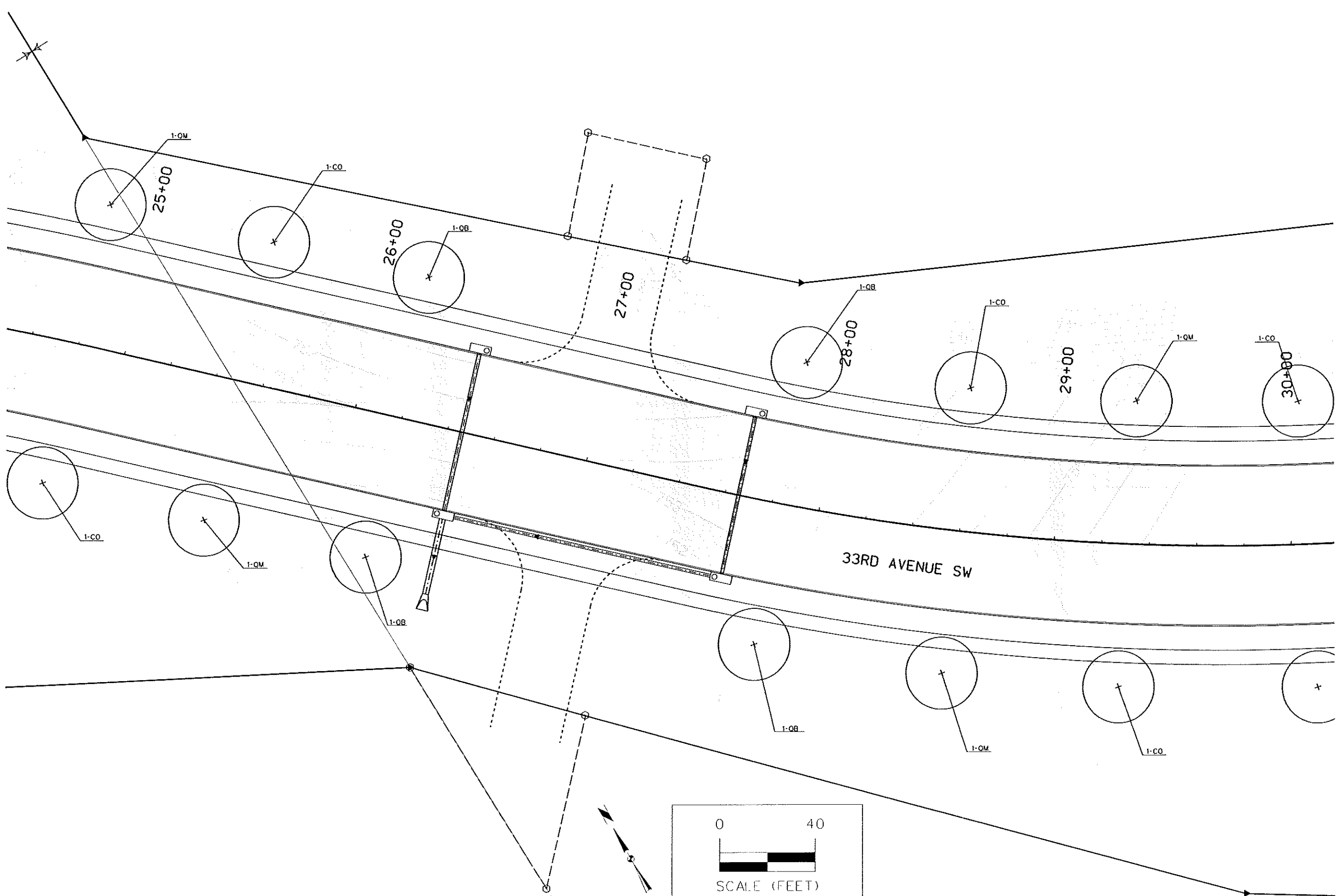
**SNYDER & ASSOCIATES**

2727 S.W. SNYDER BLVD.  
 ANKENY, IOWA 50023  
 515-964-2020

ATLANTIC IA  
 712-242-8635  
 CO. BLUFFS, IA  
 712-222-3202  
 MARIONVILLE, MO  
 866-582-3888  
 ST. LOUIS, MO  
 314-364-5222

|             |                   |             |          |        |         |
|-------------|-------------------|-------------|----------|--------|---------|
| MARK        | TLW               | Checked By: | DEC      | Scale: | 1"= 40' |
| Engineer:   | AMO               | Date:       | 07-10-09 |        |         |
| Project No: | 108.0489          |             |          |        |         |
| 1.          | PER CITY COMMENTS | 08-16-09    | DEC      |        |         |
| 2.          | PER CITY COMMENTS | 08-07-09    | AMO      |        |         |
| DATE        | BY                |             |          |        |         |

D:\12000\aspc\15104 D4893\Comp\15104R4893.dwg, 17:20:24 PM, 8/14/09, 5:49 PM  
 V:\PERM\DATE, 18  
 SUN\DATE, 18  
 SUN\DATE, 18  
 SUN\DATE, 18



**33RD AVE. SW, FROM 18TH ST. TO 10TH ST.**

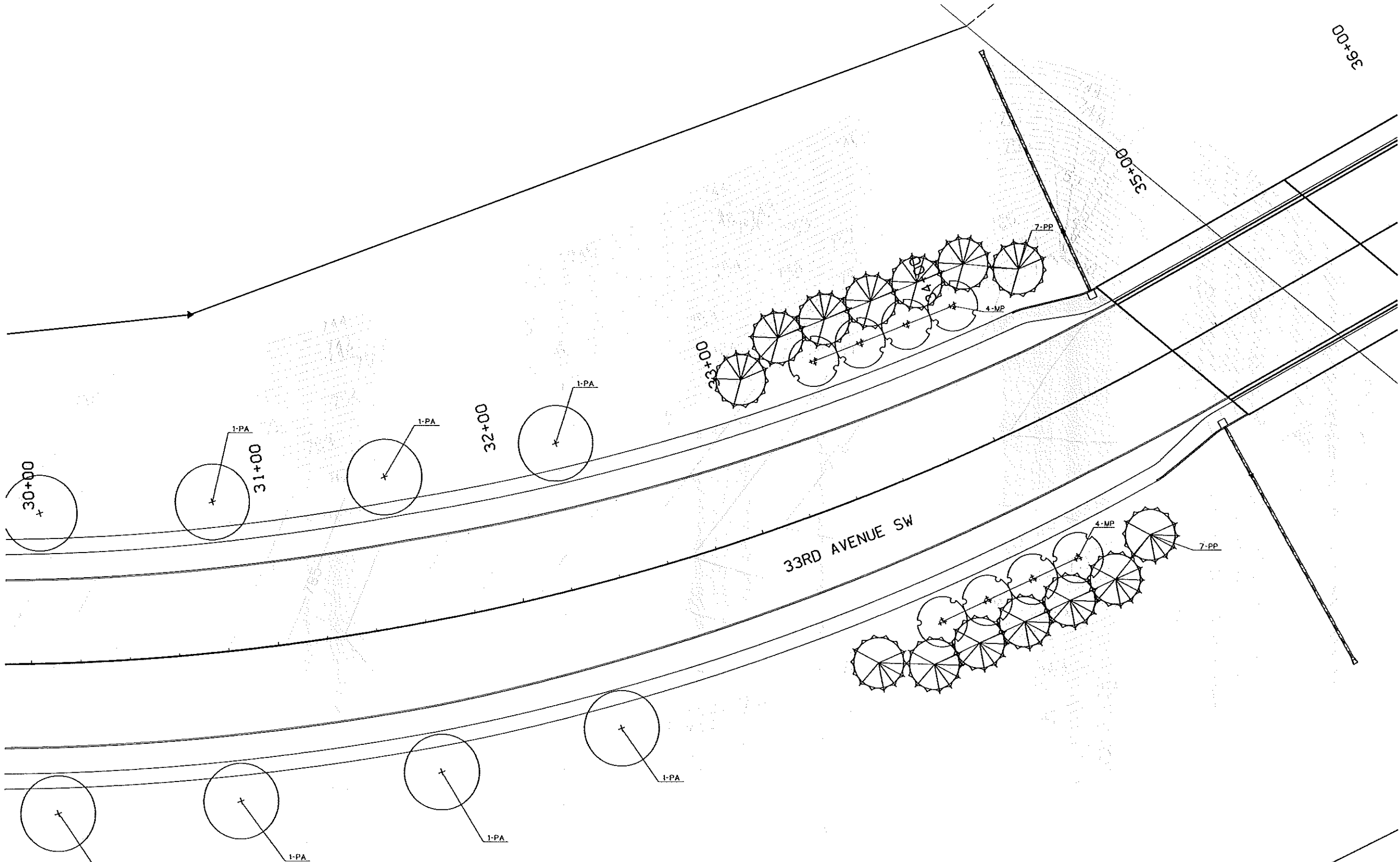
**PLANTING PLAN**

**SNYDER & ASSOCIATES**

ANKENY, IOWA 50023 | 515-964-2020  
 ATLANTIC, IA 712-242-6505  
 CO. BLUFFS, IA 966-362-8866  
 MARTVILLE, MO 816-394-4222

|                                      |                   |                 |                |                |
|--------------------------------------|-------------------|-----------------|----------------|----------------|
| MARK                                 | Engineer: TLW     | Checked By: DEC | Date: 07-10-09 | Scale: 1"= 40' |
| 1.                                   | PER CITY COMMENTS | AMO             | DEC            |                |
| 2.                                   | PER CITY COMMENTS | AMO             | DEC            |                |
| Project No: 108.0489<br>Sheet 6 of 8 |                   |                 |                |                |

DEC 11 2009 10:07:00 AM 8/11/2009 10:07:00 AM V:\Projects\108.0489\108.0489.dwg



| MARK | PER CITY COMMENTS | REVISION | DATE     | BY  |
|------|-------------------|----------|----------|-----|
| 1.   | PER CITY COMMENTS |          | 08-16-09 | DEC |
| 2.   | PER CITY COMMENTS |          | 08-07-09 | AMO |

Engineer: TLW Checked By: DEC Date: 07-10-09 Scale: 1"= 40'

Technician: AMO Date: 07-10-09

Project No: 108.0489

**33RD AVE. SW, FROM 18TH ST. TO 10TH ST.**

**PLANTING PLAN**

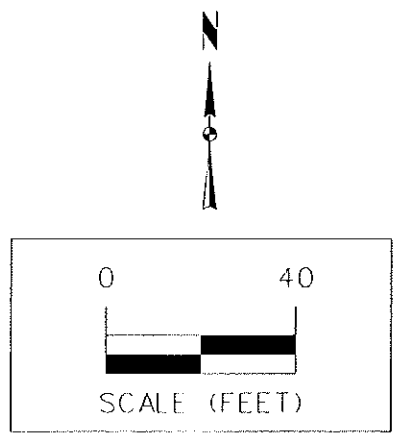
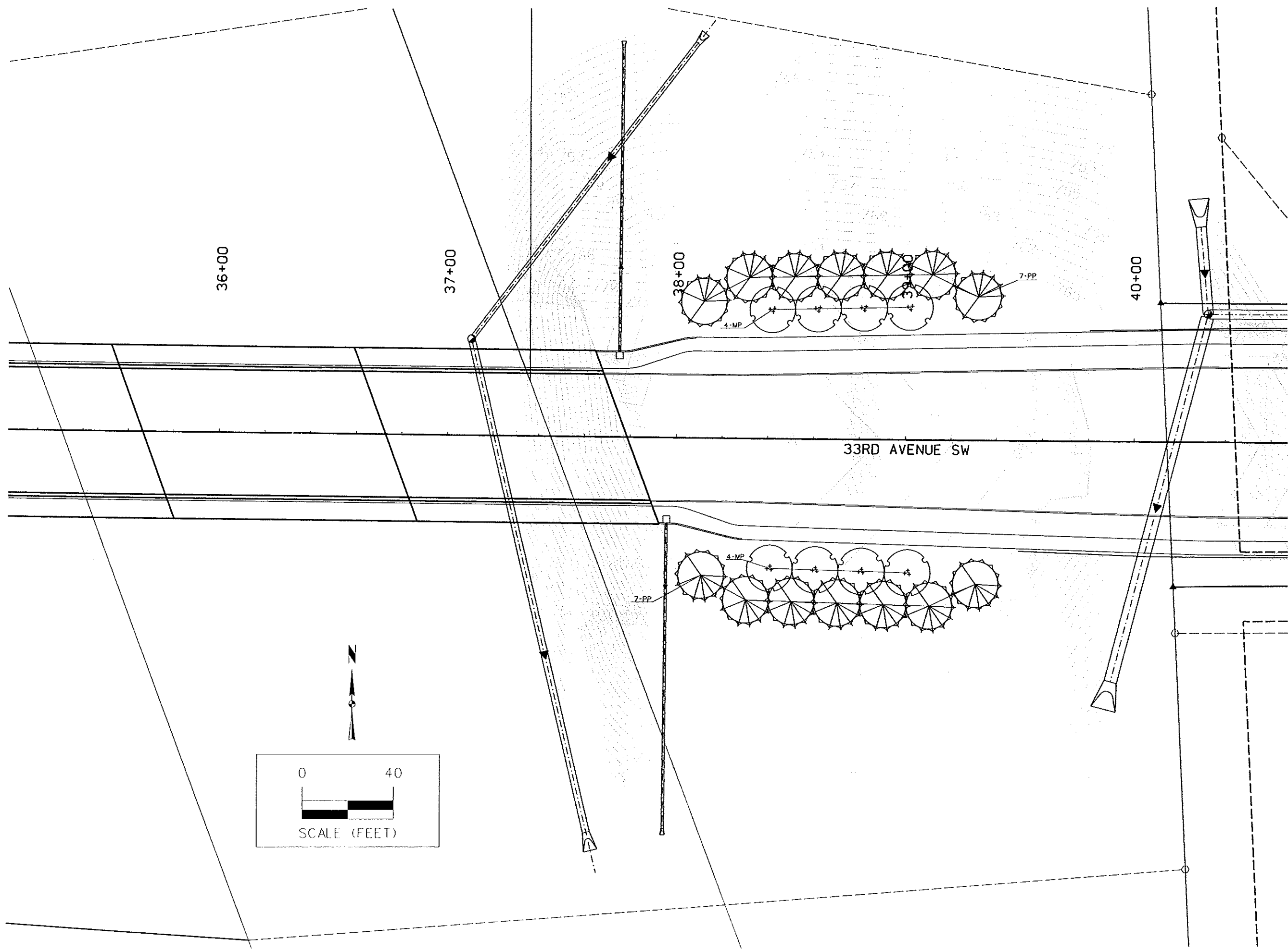
**SNYDER & ASSOCIATES**

ATLANTIC, IA 712-243-8505  
 CO. BLUFES, IA 562-362-3888  
 CEDAR RAPIDS, IA 712-322-3202  
 ST. JOSEPH, MO 816-364-6884

2727 S.W. SNYDER BLVD.  
 ANKENY, IOWA 50023  
 515-964-2020

108.0489

Sheet 7 of 8



|                      |                   |                |     |
|----------------------|-------------------|----------------|-----|
| 2.                   | PER CITY COMMENTS | 08-16-09       | DEC |
| 1.                   | PER CITY COMMENTS | 08-07-09       | AMO |
| MARK                 | REVISION          | DATE           | BY  |
| Engineer: TLW        | Checked By: DEC   | Scale: 1"= 40' |     |
| Technician: AMO      | Date: 07-10-09    |                |     |
| Project No: 108.0489 |                   |                |     |

**33RD AVE. SW, FROM 18TH ST. TO 10TH ST.**  
**PLANTING PLAN**  
**SNYDER & ASSOCIATES**  
 2727 S.W. SNYDER BLVD.  
 ANKENY, IOWA 50023  
 515-964-2020

ATLANTA, IA 712-243-5505  
 CO. BLUFFS, IA 815-562-3885  
 CEDAR RAPIDS, IA 712-222-8202  
 ST. JOSEPH, MO 316-362-8384

108.0489  
 Sheet 8 of 8