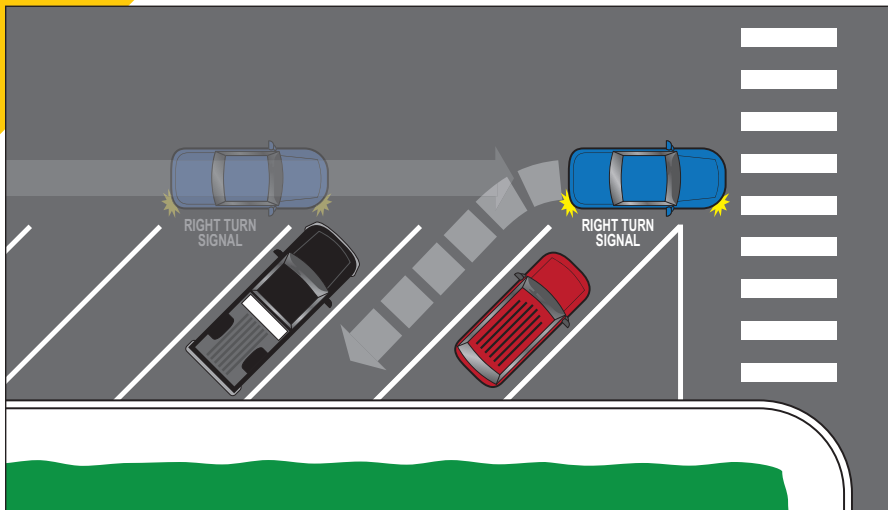


How to Park in a Back-In Angle Space

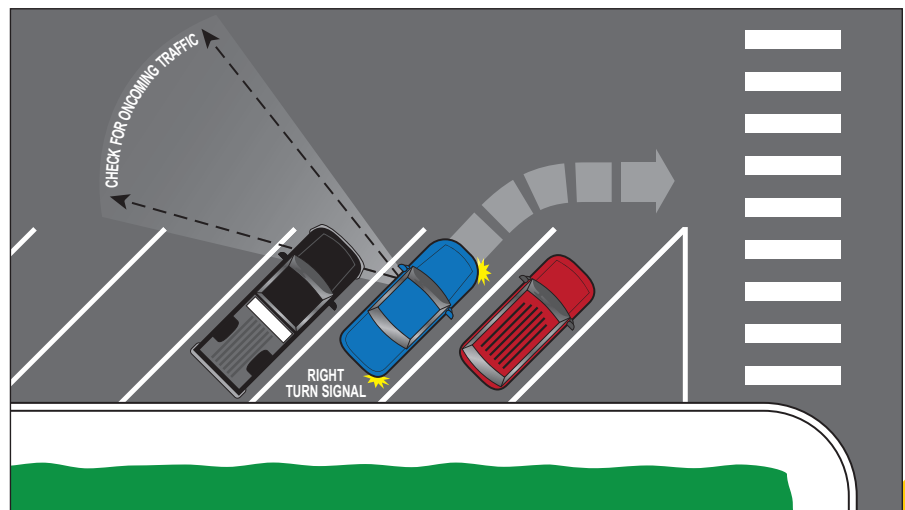


Parking in a back-in angle space is easy. It's similar to parallel parking, but requires fewer maneuvers. Follow the four simple steps below.



- 1) Use your right turn signal to indicate your intention to park.
- 2) Drive just past the parking space and stop.
- 3) Turn the wheel slightly and back into the parking space.

- 4) To leave the space, simply check for oncoming cars or bicycles before driving forward into the street.



Facts About Back-In Angle Parking

- Provides better visibility of oncoming traffic
- Safer than traditional angle parking
- No need to back into oncoming traffic
- Easier to load vehicle from curbside
- Vehicle doors open toward curb
- Simpler to maneuver than parallel parking
- Angle parking offers 60% more parking spaces

The City of Cedar Rapids is offering back-in angle parking spaces in the following downtown locations:

- West side of 1st Street SE, between 1st and 7th Avenues
- South side of the 2nd Avenue bridge
- North side of the 3rd Avenue bridge

Back-in angle parking will provide 75 additional parking spaces downtown.