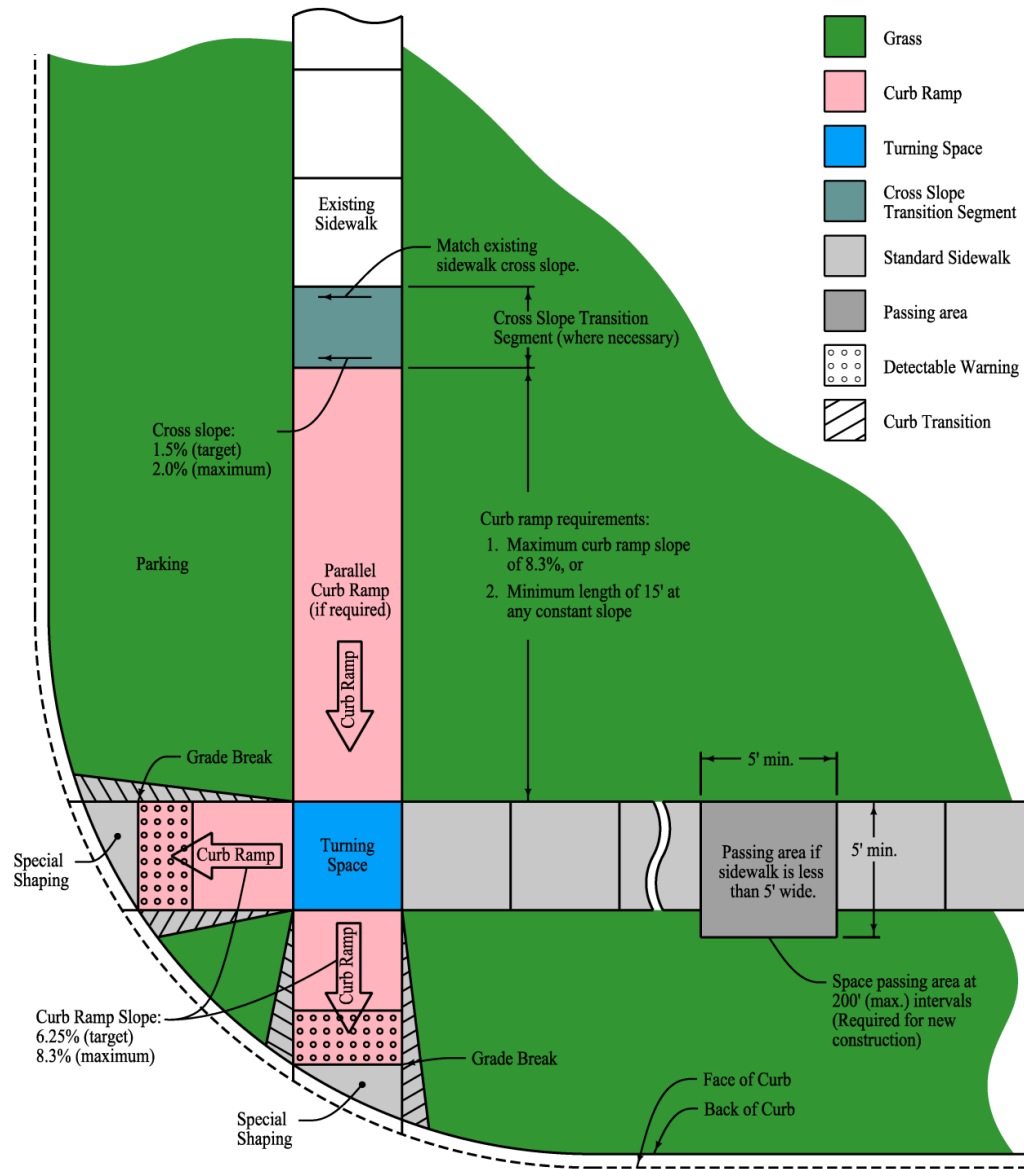






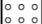

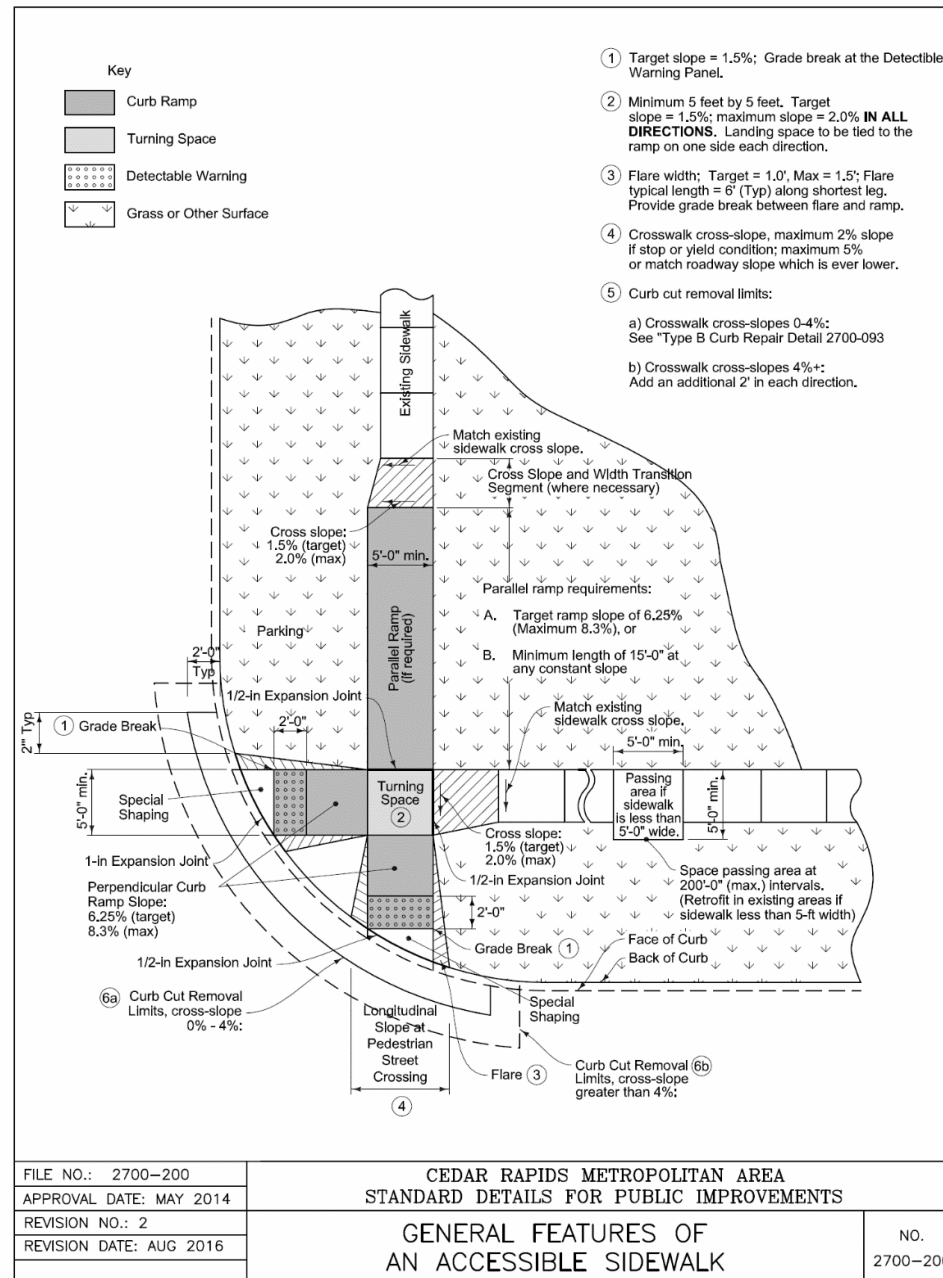


Sidewalk Ramps

Ellis Burge and Kevin Vrchoticky



-  Grass
-  Curb Ramp
-  Turning Space
-  Cross Slope Transition Segment
-  Standard Sidewalk
-  Passing area
-  Detectable Warning
-  Curb Transition



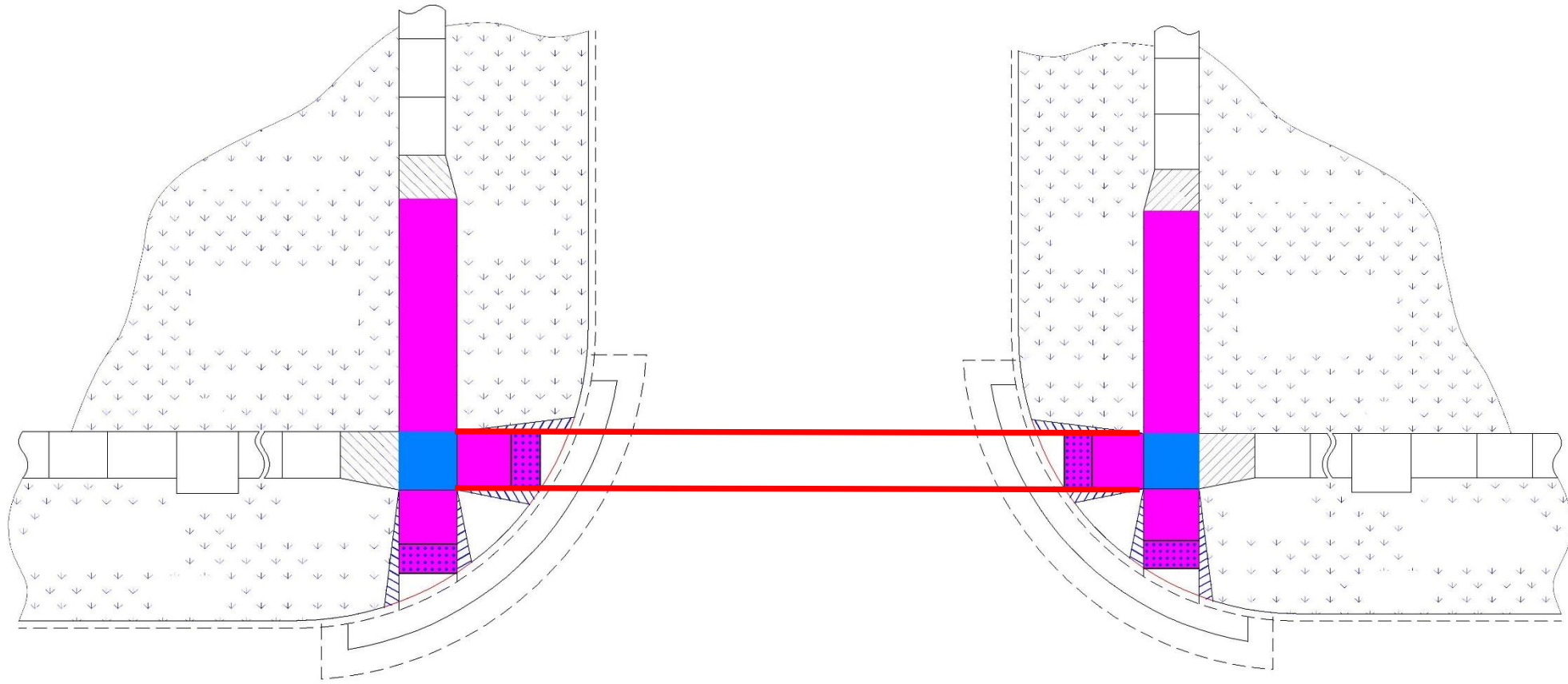
FILE NO.: 2700-200
APPROVAL DATE: MAY 2014
REVISION NO.: 2
REVISION DATE: AUG 2016

CEDAR RAPIDS METROPOLITAN AREA
STANDARD DETAILS FOR PUBLIC IMPROVEMENTS

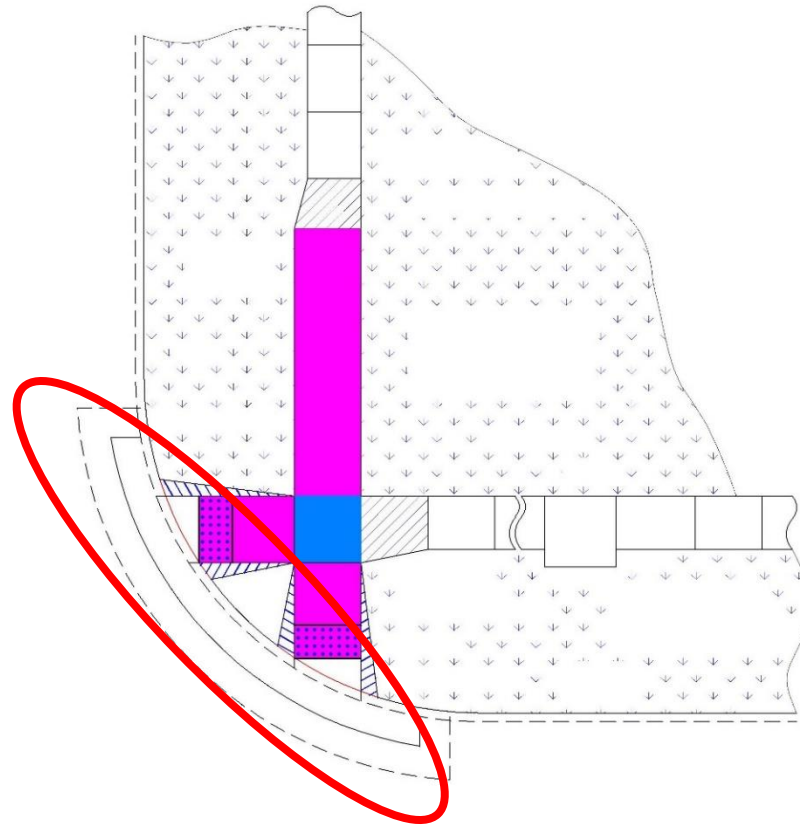
GENERAL FEATURES OF
AN ACCESSIBLE SIDEWALK

NO.
2700-200

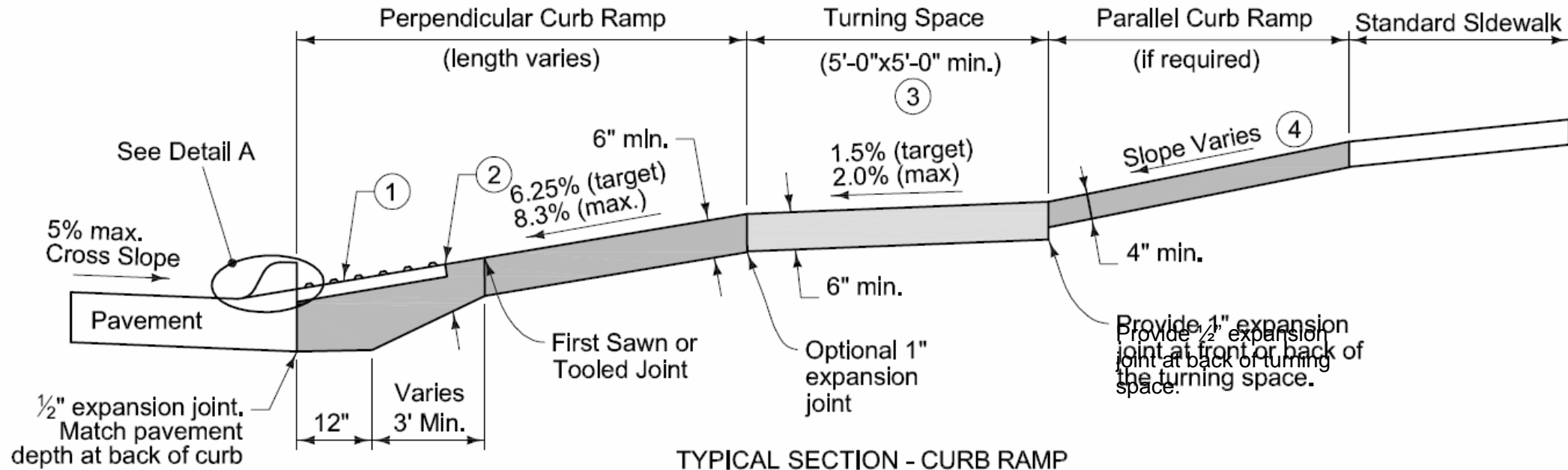
Ramp Alignment



Curb Cut

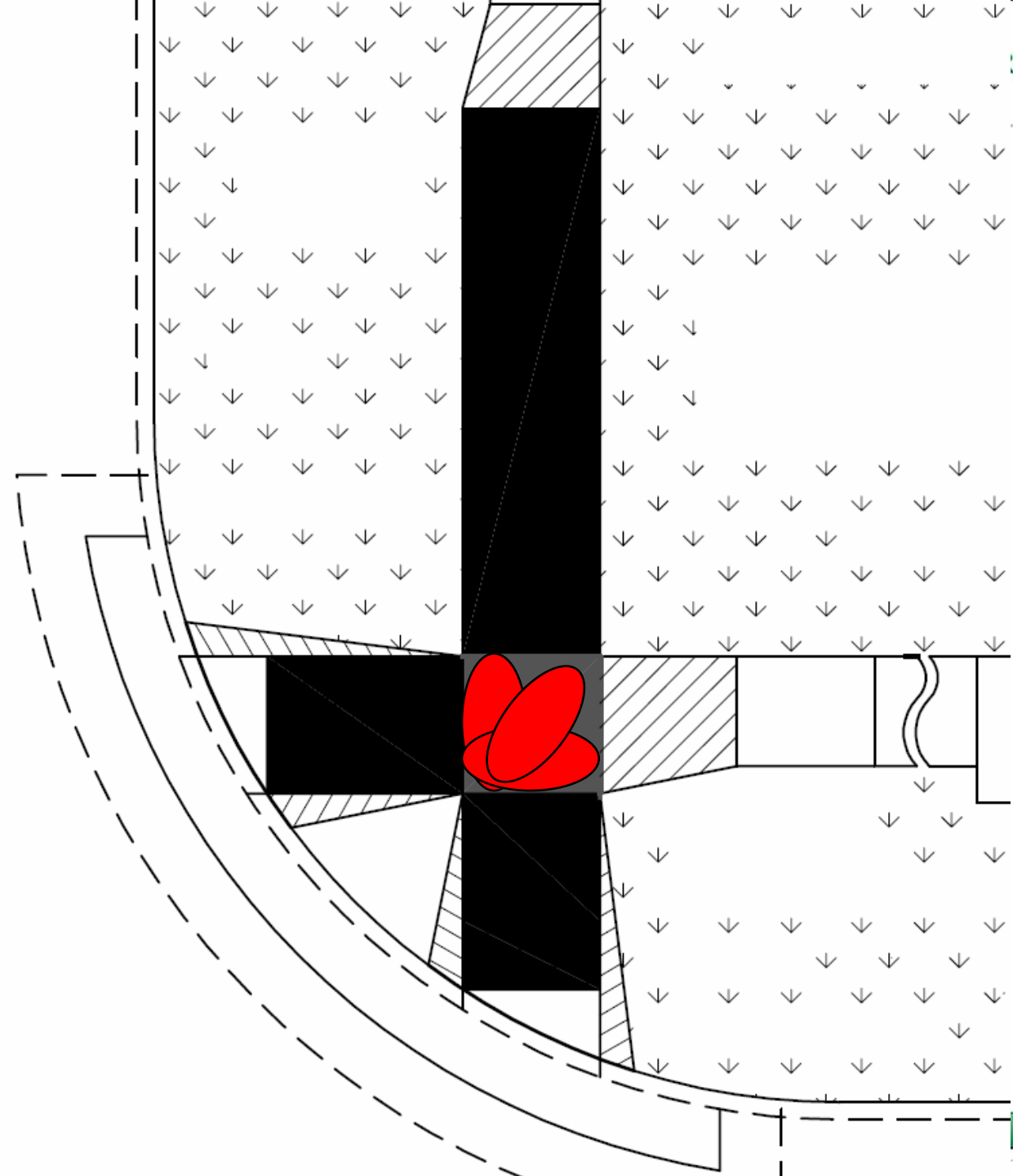


Checking Formwork



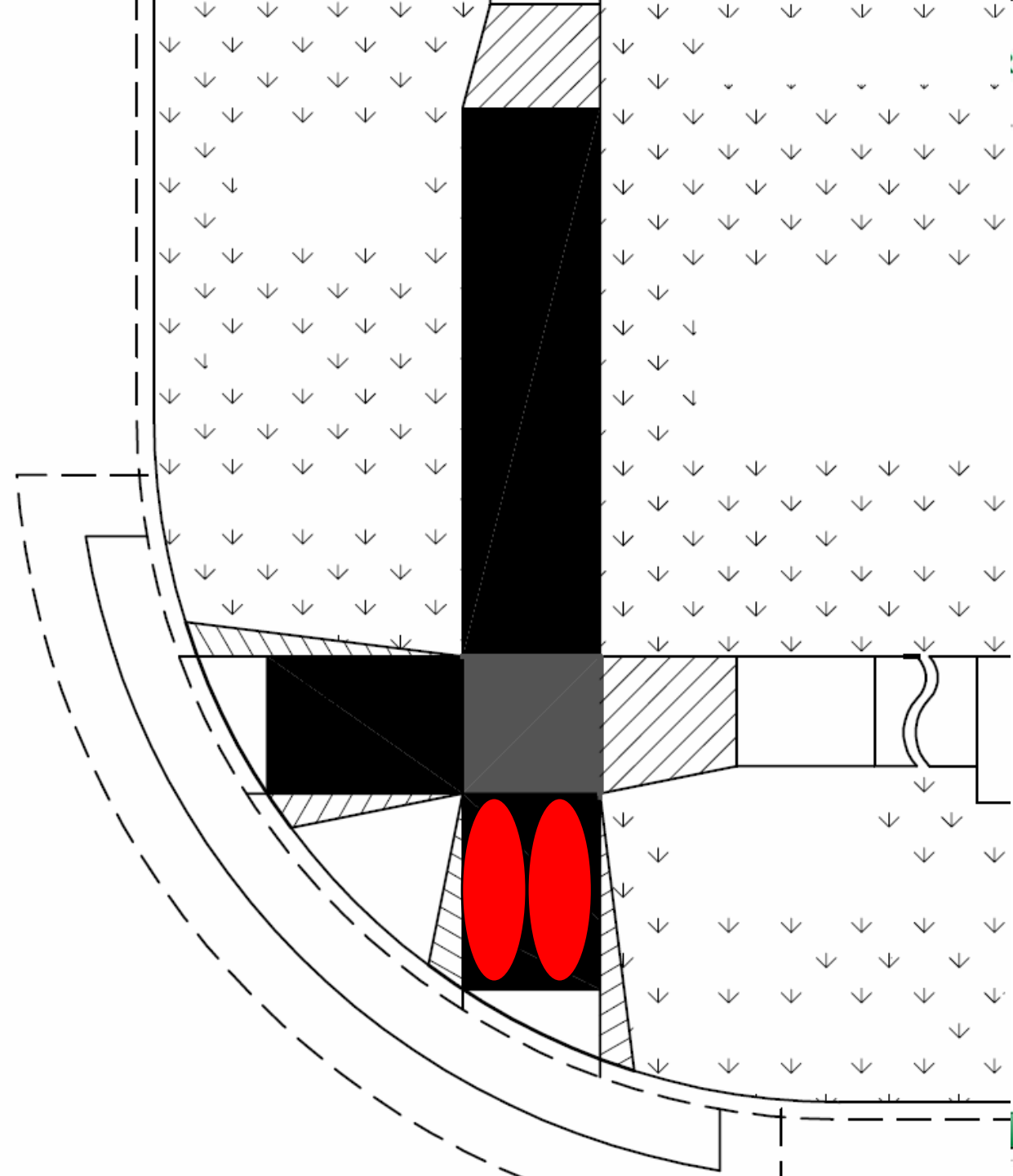
Turning Space

Max slope in ANY
direction is 2.0%



Ramp Running Slope

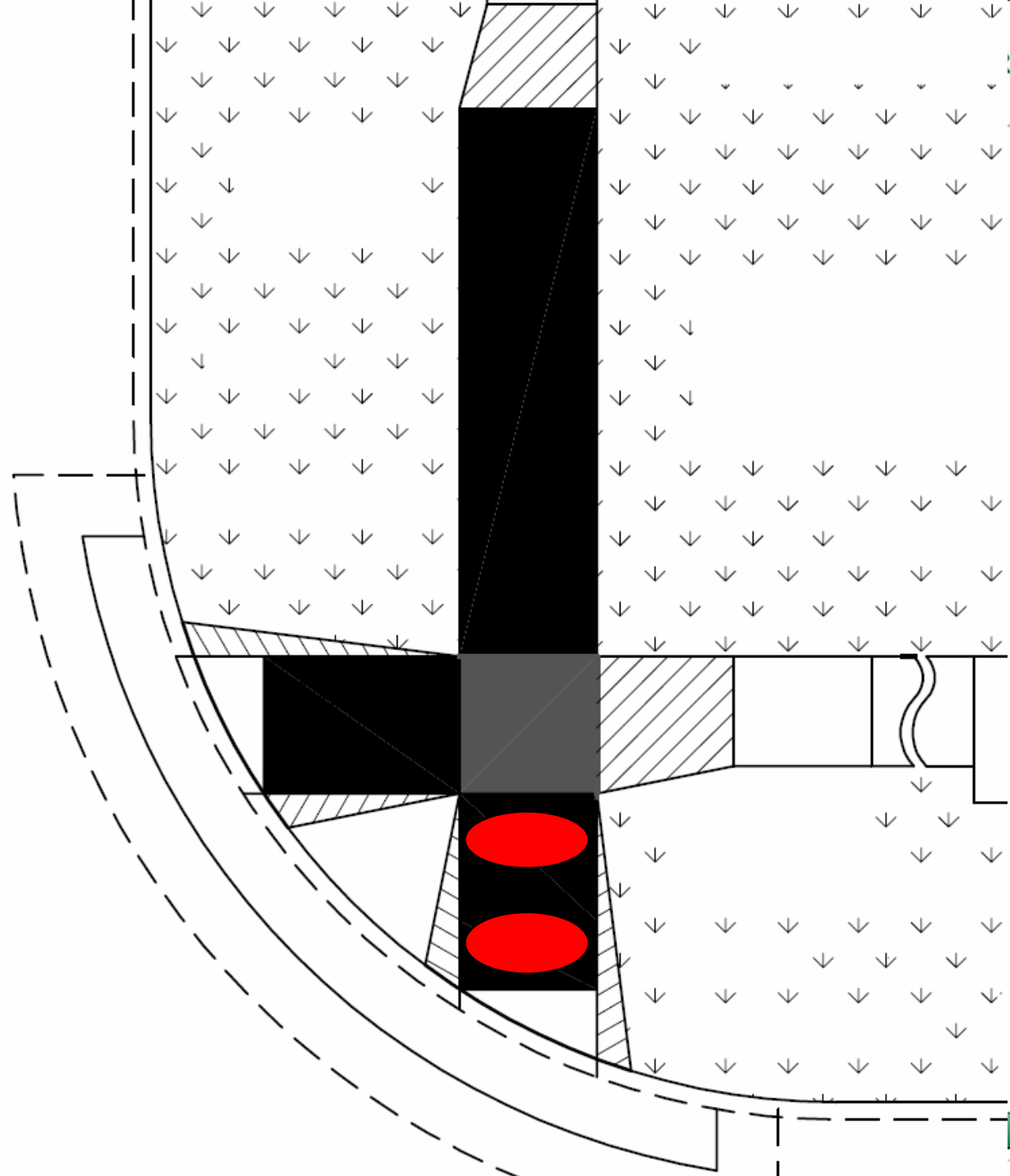
Target: 6.25%
Max: 8.33%



Ramp Cross Slope

Target 1.5%

Max Slope: 2%

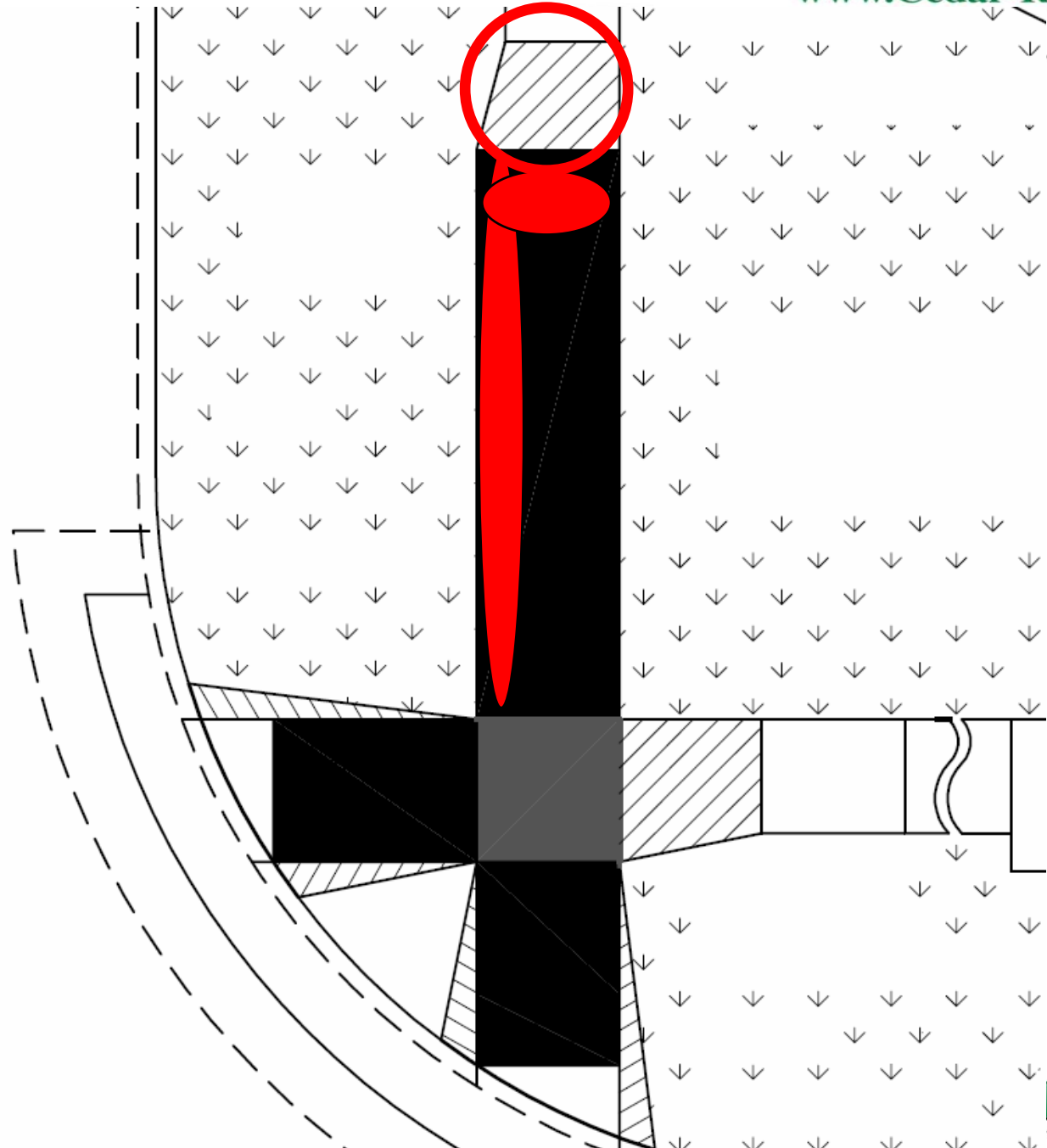


Secondary Ramp

Continuous run over 8.3%
must be longer than 15'

Cross slope max: 2.0%

Transition panel is located
after the secondary ramp



Questions?